
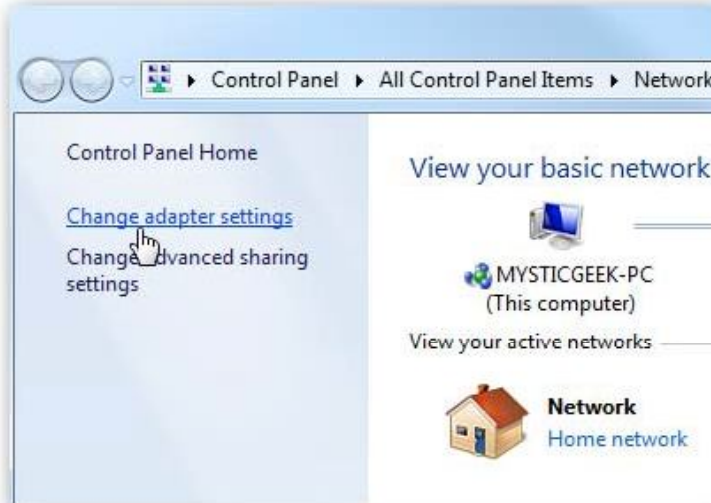


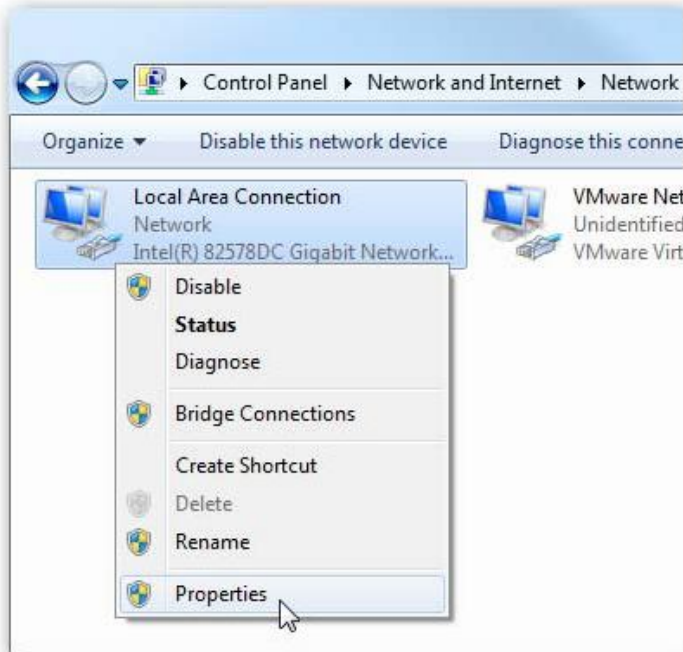
Configure the DNS Server Entry

Windows 7 Editions

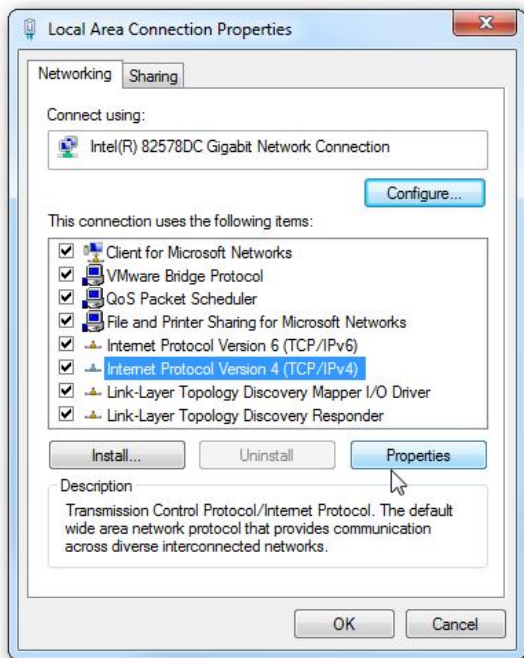
1. Open Network Connections by clicking the **Start** button , and then clicking **Control Panel**. Click on **Network and Sharing Center**.
2. Click on **Change adapter settings** the connection that you want to change.



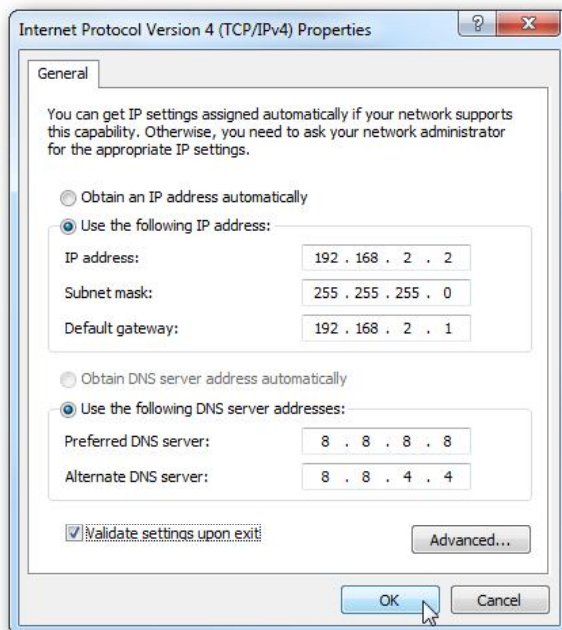
3. Right-click on your local adapter and select **Properties**.



4. Click the Networking tab, click **Internet Protocol Version 4 (TCP/IPv4)**, and then click **Properties**.




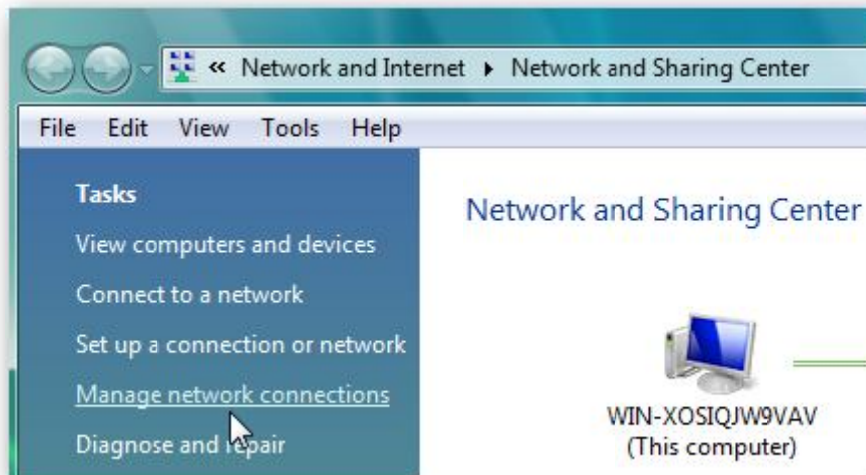
5. To specify DNS server address settings, Click “Use the following DNS server addresses”, and then, in the Preferred DNS server and Alternate DNS server boxes, type **130.126.2.131** for primary and **Leave Blank** for the secondary DNS, and then click OK.



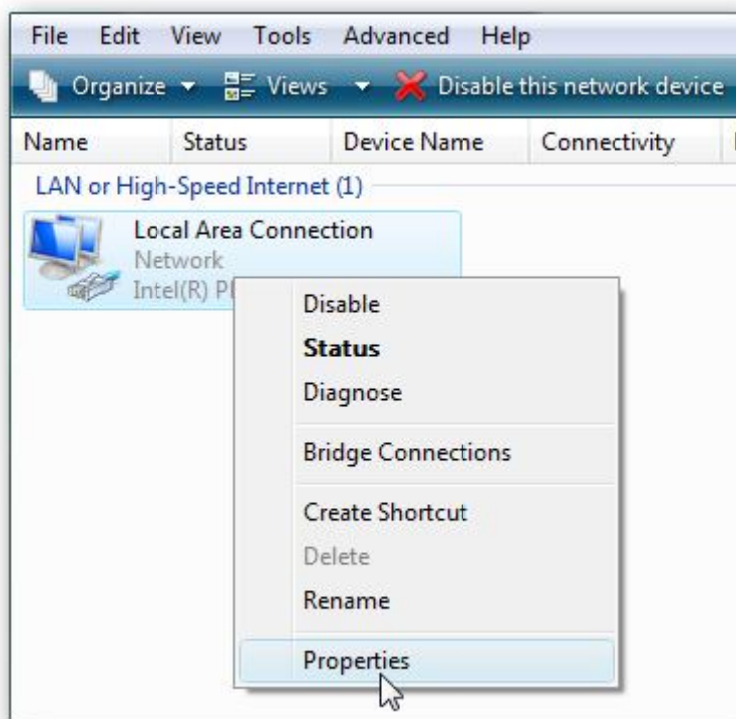
6. Now close out of the Local Area Connections Properties window.

Windows Vista

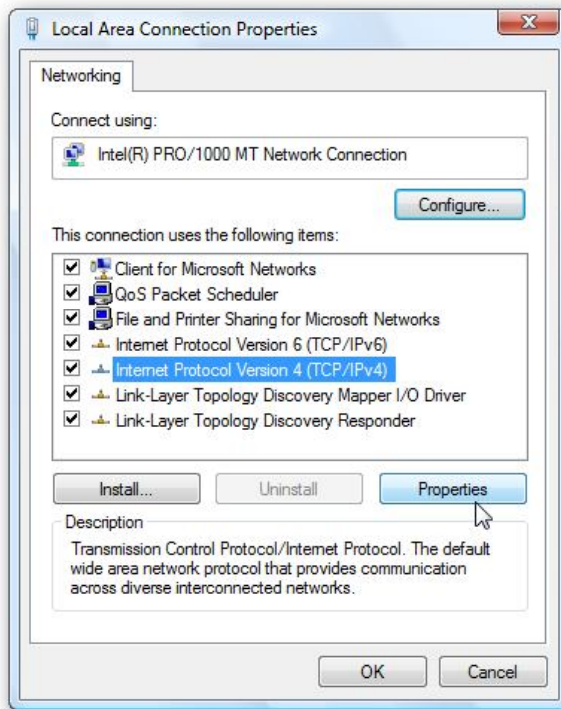
1. Open Network Connections by clicking the **Start** button , clicking **Control Panel**, clicking **Network and Internet**, clicking **Network and Sharing Center**, and then clicking **Manage network connections**.



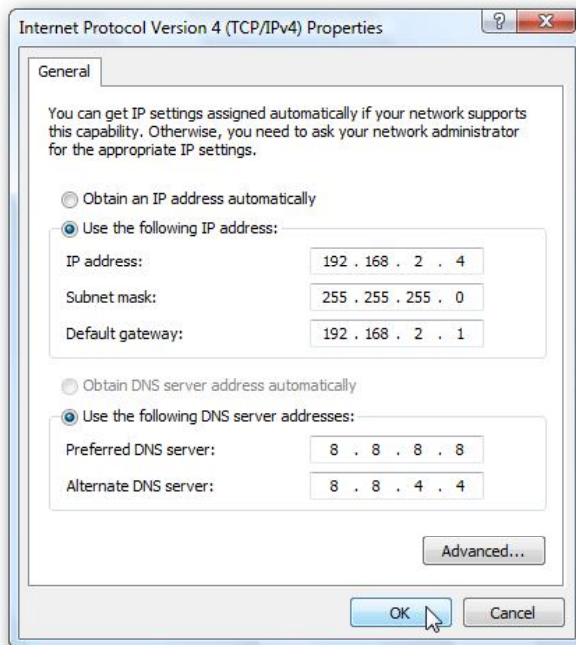
2. Right-click the connection that you want to change, and then click **Properties**.



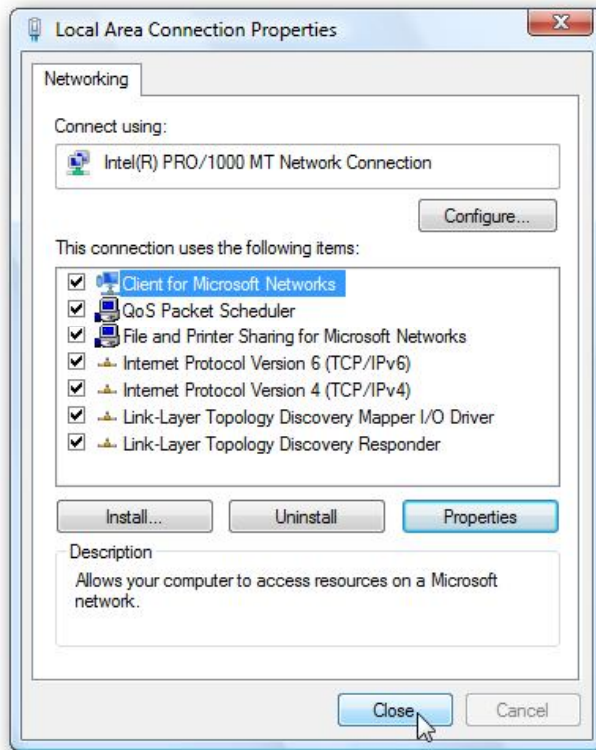
3. Click the Networking tab, click **Internet Protocol Version 4 (TCP/IPv4)**, and then click **Properties**.



4. To specify a DNS server address, click “Use the following DNS server addresses”, and then, in the Preferred DNS server and Alternate DNS server boxes, type **130.126.2.131** for primary and **Leave Blank** for the secondary DNS, and then click **OK**.

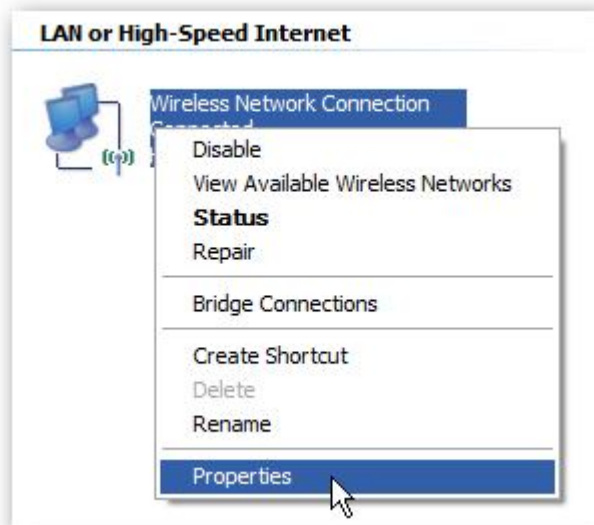


5. **Close** out of Local Area Connection Properties for the settings to go into effect.

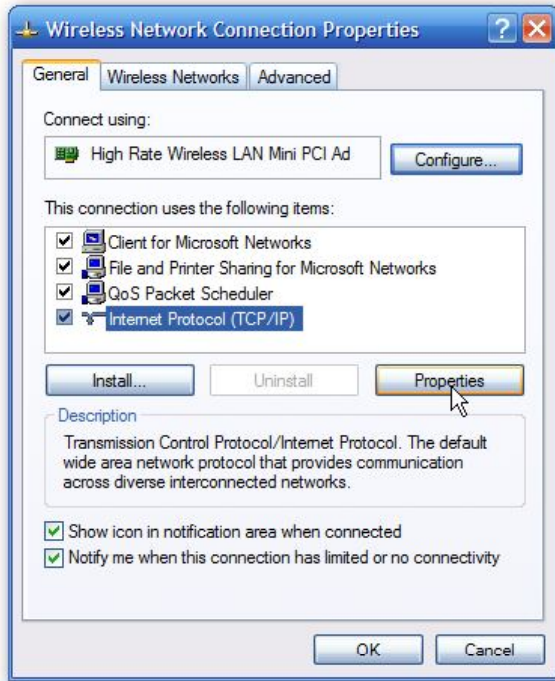


Windows XP

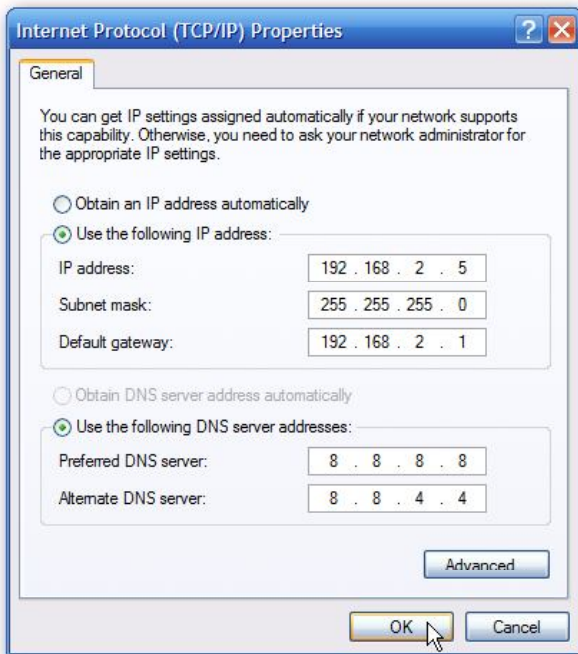
1. Click **Start**, click **Control Panel**, click **Network and Internet Connections**, and then click **Network Connections**.
2. Right-click the network connection that you want to configure, and then click **Properties**.



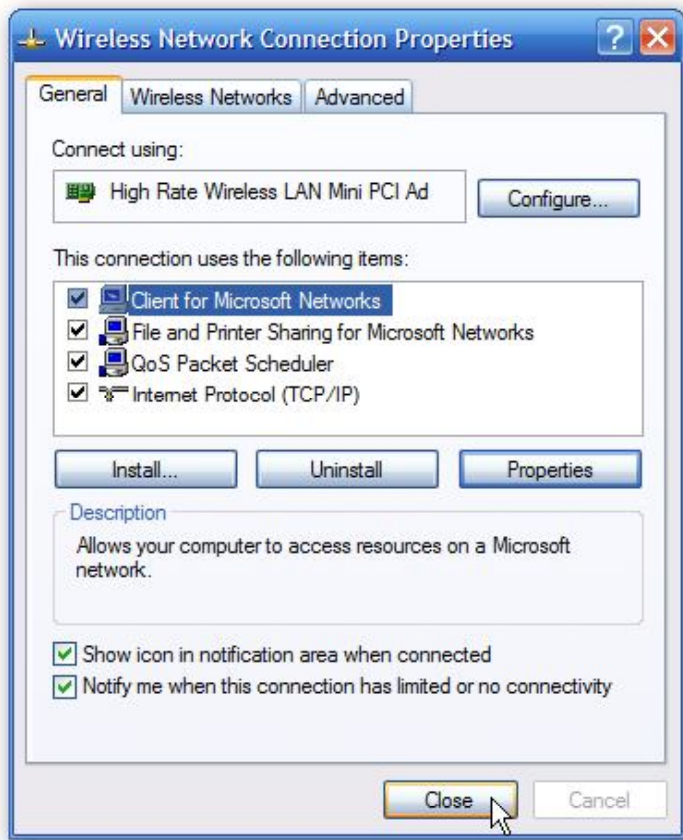
3. On the General tab (for a local area connection), click Internet Protocol (TCP/IP), and then click **Properties**.



4. Click “Use the following DNS server addresses”, and then type the preferred DNS server (**130.126.2.131**) and alternate DNS server (**Leave Blank**) IP addresses in the Preferred DNS server and Alternate DNS server boxes, Click **OK**.

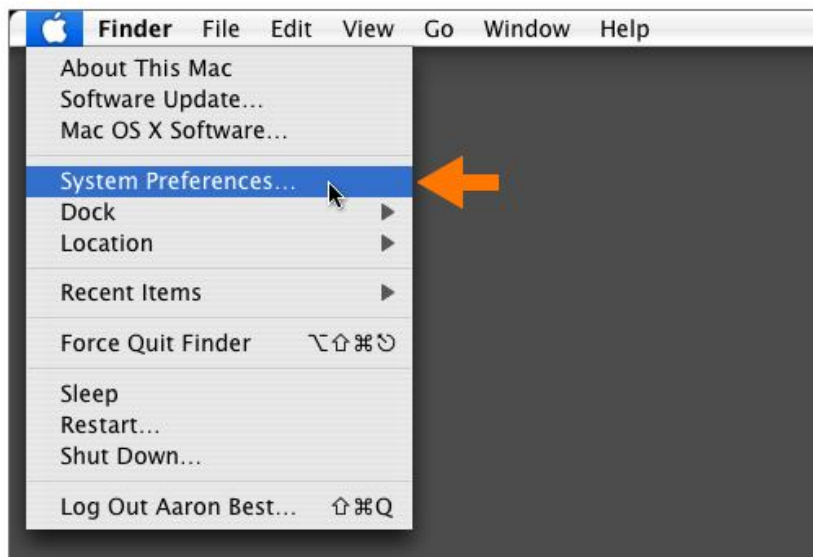


5. **Close** out of the Network Connection Properties screen before the changes go into effect.



Mac OS X 10.4 (Tiger)

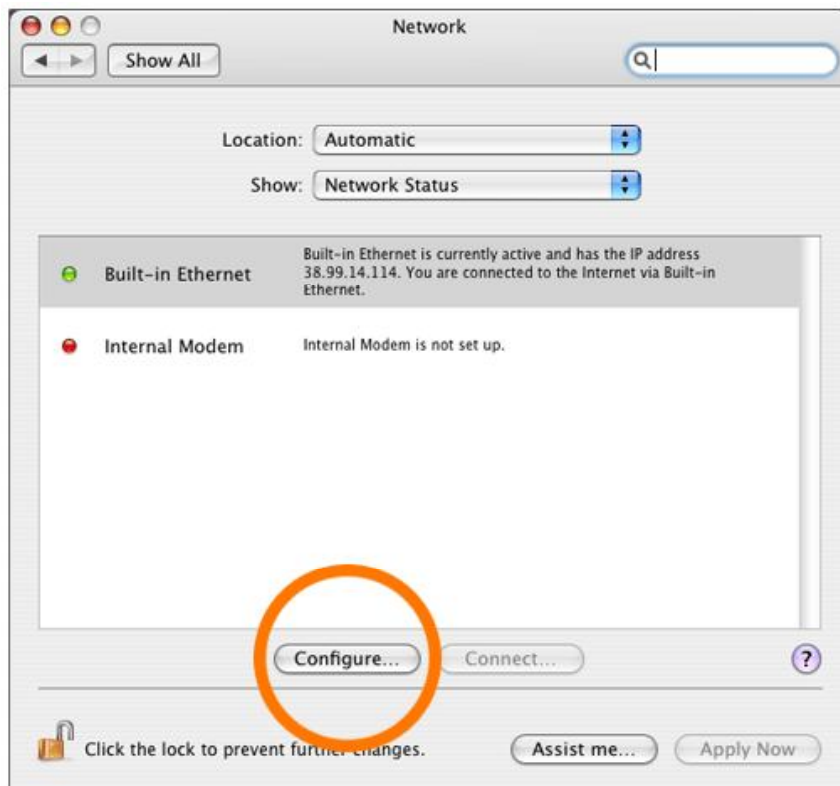
1. Click on the **Apple** icon in the upper left hand corner of the screen, Select **System Preferences**.



2. Click **Network** from the Internet & Network row.



3. On the **Network** screen, you will need to check the **Location** to make sure you are editing the correct connection. For most this will be **Automatic**, but you can use the double arrow to change the **Location** if necessary. Click **Configure...** button at the bottom of the screen. Your default connection method (Built-in Ethernet, for example) will be highlighted.

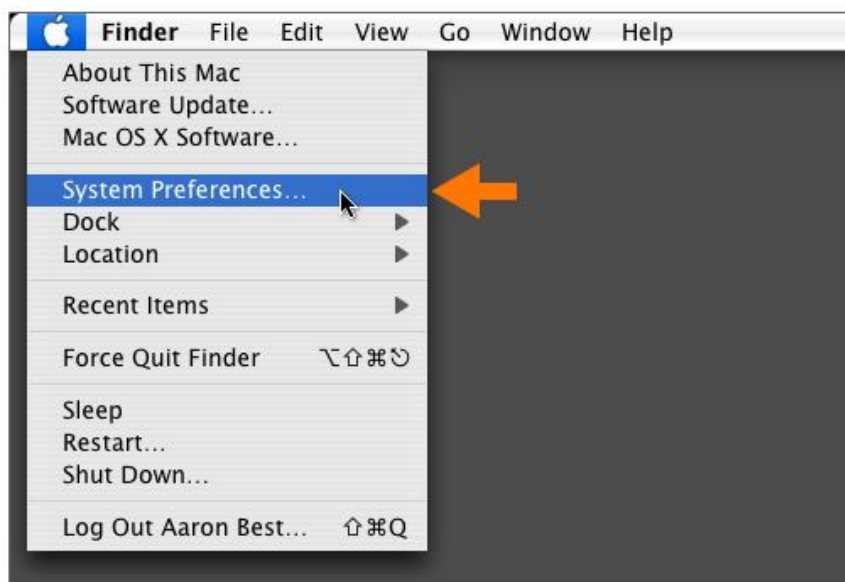


4. Click on the **TCP/IP** tab if it is not already selected. Remove the old **DNS** entries from the **DNS Servers** section, and input the new **DNS server 130.126.2.131**. Click on **Apply Now** and then close the **Network** window.



Mac OS X 10.5 (Leopard); OS X 10.6 (Snow Leopard); OS X 10.7 (Lion)

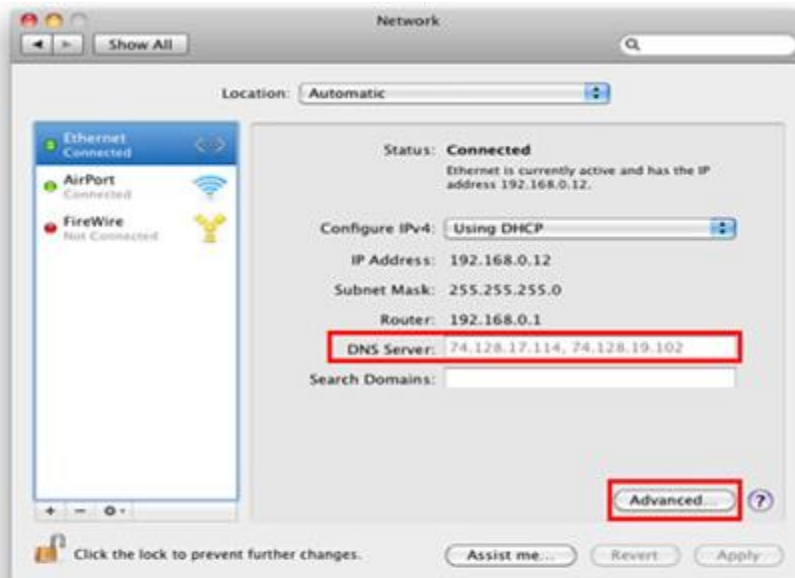
1. Click on the **Apple** icon in the upper left hand corner, and then click on **System Preferences**.



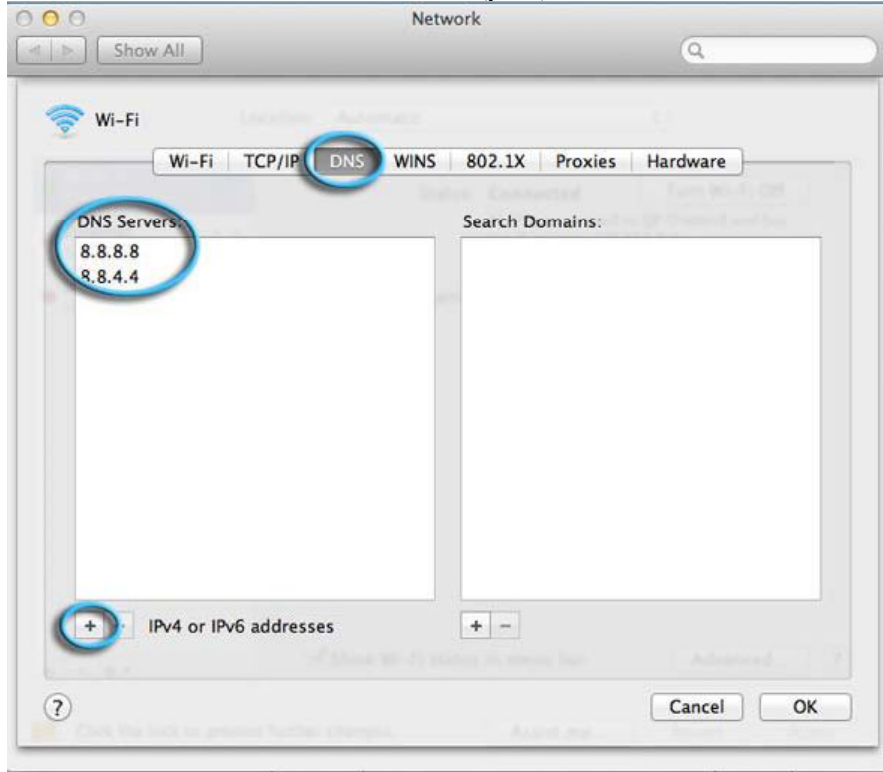
2. In the **Internet & Network** section double-click on the **Network** icon.



3. On the left hand side select the Connection that is being used, and then click on the **Advanced** button.



4. Click on the **DNS** tab and use the – (minus) button in the lower left hand corner to remove current DNS entries. Then use the + (plus) button to add **130.126.2.131** DNS entry.



5. Click **OK**, and on the next screen click **Apply** if it is accessible. Close the Network window and **Save Changes** if asked. Close the **System Preferences** window.